

\$350,000 - 201 10108 125 Street, Edmonton

MLS® #E4414615

\$350,000

1 Bedroom, 2.00 Bathroom, 1,161 sqft
Condo / Townhouse on 0.00 Acres

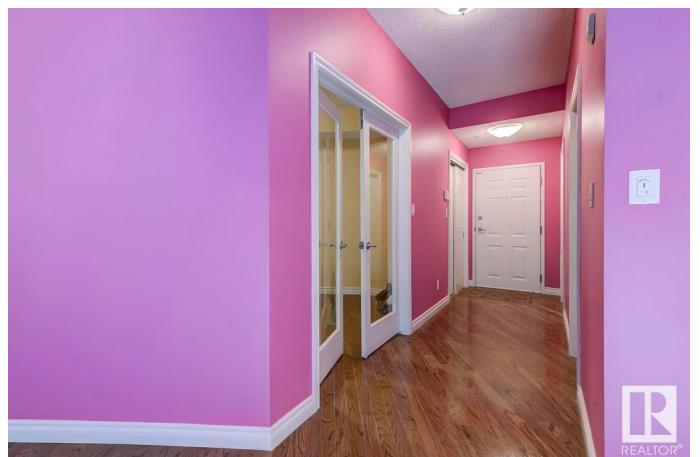
Westmount, Edmonton, AB

UNBELIEVABLE Price & Opportunity to own this Executive 1 bedroom, plus den, 2-bathroom, 1160 sq. ft. unit in one of Edmonton's most Exclusive Downtown addresses at Properties on High Street 10108-125 Street. This property boasts 9-foot ceilings throughout and is ready for you to Renovate it to your Personal Style and Taste. Stunning east exposure Overlooking Green Space, the River Valley, Victoria Golf Course, and the edge of downtown. This unit has Central Air conditioning with building amenities that include an exercise room and a beautiful outdoor garden & lounging area. Amazing location close to all those trendy 124th street shops, restaurants, walking trails and public transportation. 2 (Titled) Underground tandem parking stalls - legal unit 81 and stall numbers 32 and 33. Entire Exterior Modernization Project will be complete in 2025 and will Look Stunning!! ATTN Pet Owners!! Cats & Dogs under 10KG are Automatically Accepted without board approval

Built in 2002

Essential Information

MLS® #	E4414615
Price	\$350,000
Bedrooms	1



Bathrooms	2.00
Full Baths	2
Square Footage	1,161
Acres	0.00
Year Built	2002
Type	Condo / Townhouse
Sub-Type	Apartment High Rise
Style	Single Level Apartment
Status	Active

Community Information

Address	201 10108 125 Street
Area	Edmonton
Subdivision	Westmount
City	Edmonton
County	ALBERTA
Province	AB
Postal Code	T5N 4B6

Amenities

Amenities	Air Conditioner, Ceiling 9 ft., Deck, No Animal Home, No Smoking Home, Parking-Visitor, Secured Parking, Security Door, Sprinkler System-Fire
Parking Spaces	2
Parking	Heated, Tandem, Underground

Interior

Interior Features	ensuite bathroom
Appliances	Dishwasher-Built-In, Dryer, Refrigerator, Stove-Electric, Washer
Heating	Forced Air-1, Natural Gas
Fireplace	Yes
Fireplaces	Mantel
# of Stories	10
Stories	1
Has Basement	Yes
Basement	None, No Basement

Exterior

Exterior	Concrete, Brick, Stucco
----------	-------------------------

Exterior Features	Hillside, Landscaped, Park/Reserve, Picnic Area, Public Transportation, Shopping Nearby, View City, View Downtown
Roof	Metal, Tar & Gravel
Construction	Concrete, Brick, Stucco
Foundation	Concrete Perimeter

Additional Information

Date Listed	November 25th, 2024
Days on Market	135
Zoning	Zone 07
Condo Fee	\$931

DATA IS DEEMED RELIABLE BUT IS NOT GUARANTEED ACCURATE BY THE REALTORS® ASSOCIATION OF EDMONTON. COPYRIGHT 2025 BY THE REALTORS® ASSOCIATION OF EDMONTON. ALL RIGHTS RESERVED. Trademarks are owned or controlled by the Canadian Real Estate Association (CREA) and identify real estate professionals who are members of CREA (REALTOR®, REALTORS®) and/or the quality of services they provide (MLS®, Multiple Listing Service®)

Listing information last updated on April 8th, 2025 at 10:17pm MDT