

\$279,000 - 43 300 Hooper Crescent, Edmonton

MLS® #E4418102

\$279,000

3 Bedroom, 2.50 Bathroom, 1,255 sqft
Condo / Townhouse on 0.00 Acres

Overlanders, Edmonton, AB

Attention home owners and INVESTORS (which is the same thing really. This excellent fully fenced half duplex with a single attached garage is the full package indeed with a unique location backing the popular Kennedale ravine trail system !! The open design floor plan features a spacious kitchen overlooking the private back yard with large deck, comfortable family room, cozy fireplace, half bath and direct garage access. Upstairs you have a large master with en-suite, 2 good sized bedrooms and a 4 piece bath perfect for a growing family. The basement is unfinished but spacious enough to do most everything. **BONUS LOW CONDO FEES !!!** Check on availability

Built in 1996

Essential Information

MLS® #	E4418102
Price	\$279,000
Bedrooms	3
Bathrooms	2.50
Full Baths	2
Half Baths	1
Square Footage	1,255
Acres	0.00
Year Built	1996



Type Condo / Townhouse
Sub-Type Half Duplex
Style 2 Storey
Status Active

Community Information

Address 43 300 Hooper Crescent
Area Edmonton
Subdivision Overlanders
City Edmonton
County ALBERTA
Province AB
Postal Code T5A 5B3

Amenities

Amenities Deck, Exterior Walls- 2"x6", F
Parking Front Drive Access, Over Siz

Interior

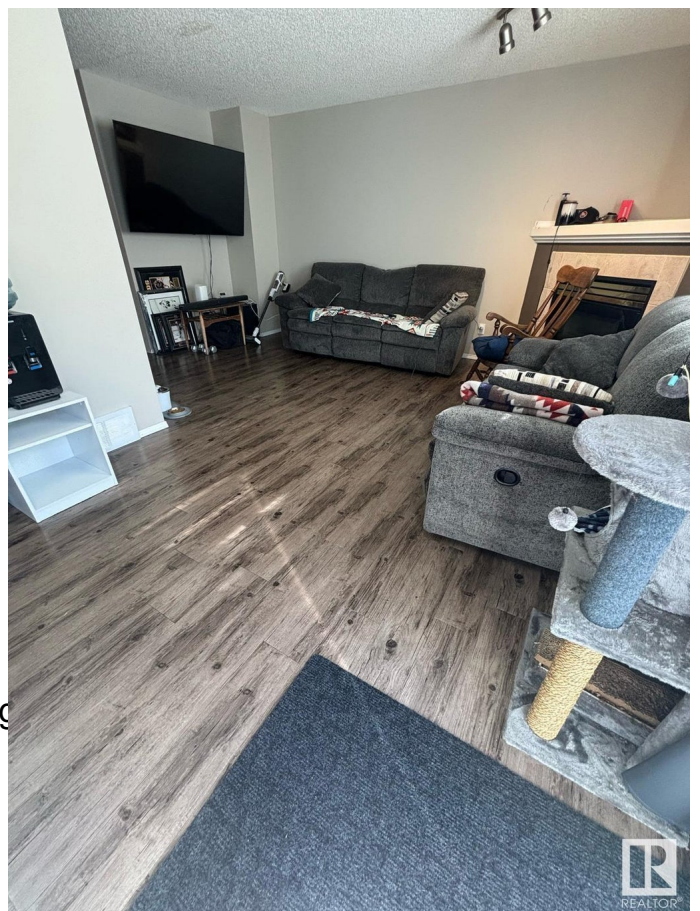
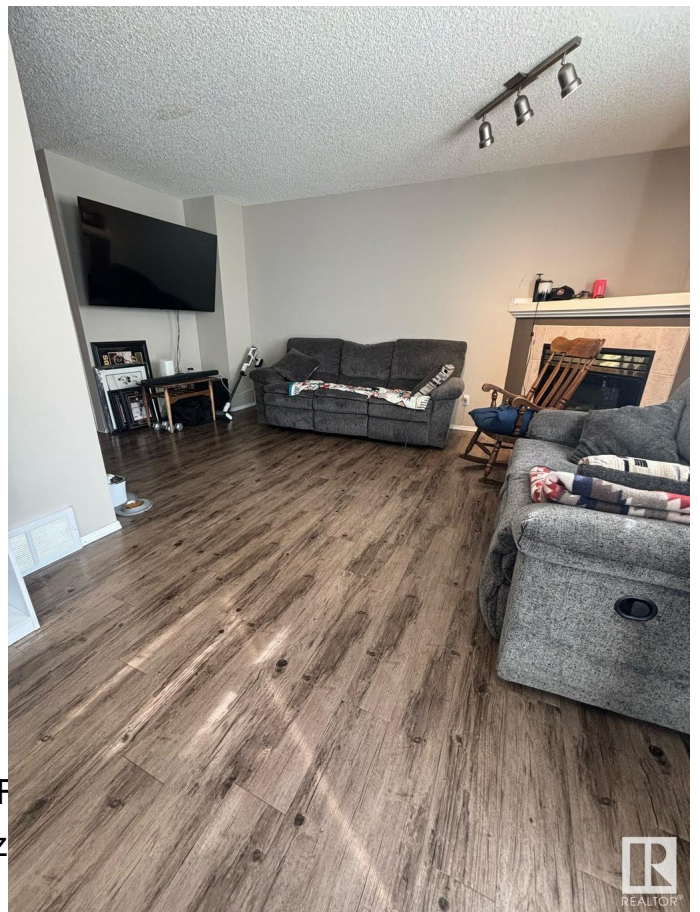
Interior Features ensuite bathroom
Appliances Dishwasher-Built-In, Dryer,
Washer, Window Coverings
Heating Forced Air-1, Natural Gas
Fireplace Yes
Fireplaces Mantel
Stories 2
Has Basement Yes
Basement Full, Unfinished

Exterior

Exterior Wood, Vinyl
Exterior Features Cul-De-Sac, Fenced, Golf
Park/Reserve, Private Setting
Roof Asphalt Shingles
Construction Wood, Vinyl
Foundation Concrete Perimeter

Additional Information

Date Listed January 14th, 2025



Days on Market	80
Zoning	Zone 35
Condo Fee	\$154

DATA IS DEEMED RELIABLE BUT IS NOT GUARANTEED ACCURATE BY THE REALTORS® ASSOCIATION OF EDMONTON. COPYRIGHT 2025 BY THE REALTORS® ASSOCIATION OF EDMONTON. ALL RIGHTS RESERVED. Trademarks are owned or controlled by the Canadian Real Estate Association (CREA) and identify real estate professionals who are members of CREA (REALTOR®, REALTORS®) and/or the quality of services they provide (MLS®, Multiple Listing Service®)

Listing information last updated on April 4th, 2025 at 2:17pm MDT