

# \$680,000 - 5210 Kimball Cr, Edmonton

MLS® #E4418146

## \$680,000

4 Bedroom, 2.50 Bathroom, 2,019 sqft

Single Family on 0.00 Acres

Keswick Area, Edmonton, AB

This house is located in the beautiful community of Keswick and walking distance to K-9 school ,parks & trails, Antony Henday, Shopping Centre This beautiful two story home built in year 2022, facing east, situated on a regular lot. This residence being a show home before have lot of upgrades, featuring 9-foot ceilings on all three (3) levels and open to below family area, Kitchen comes with custom cabinets, upgraded quartz counter tops, upgraded appliances, Main floor den/bedroom with window, upgraded glass railing to stair with step lights, first floor have three (3) bedrooms includes Master En-Suite, guest wash room, and bonus room to have movie and party time with family and friends and comes with front attached garage. The house comes with separate entrance with unfinished basement potential to build custom legal basement and rent it out that can offset mortgage.

Built in 2022

### Essential Information

MLS® #	E4418146
Price	\$680,000
Bedrooms	4
Bathrooms	2.50
Full Baths	2



Half Baths	1
Square Footage	2,019
Acres	0.00
Year Built	2022
Type	Single Family
Sub-Type	Detached Single Family
Style	2 Storey
Status	Active

### **Community Information**

Address	5210 Kimball Cr
Area	Edmonton
Subdivision	Keswick Area
City	Edmonton
County	ALBERTA
Province	AB
Postal Code	T6W 4Z2

### **Amenities**

Amenities	Ceiling 9 ft., Deck
Parking	Double Garage Attached

### **Interior**

Interior Features	ensuite bathroom
Appliances	Dishwasher - Energy Star, Dryer, Garage Control, Garage Opener, Hood Fan, Oven-Built-In, Refrigerator, Stove-Electric, Washer, Window Coverings
Heating	Forced Air-1, Natural Gas
Stories	2
Has Basement	Yes
Basement	Full, Unfinished

### **Exterior**

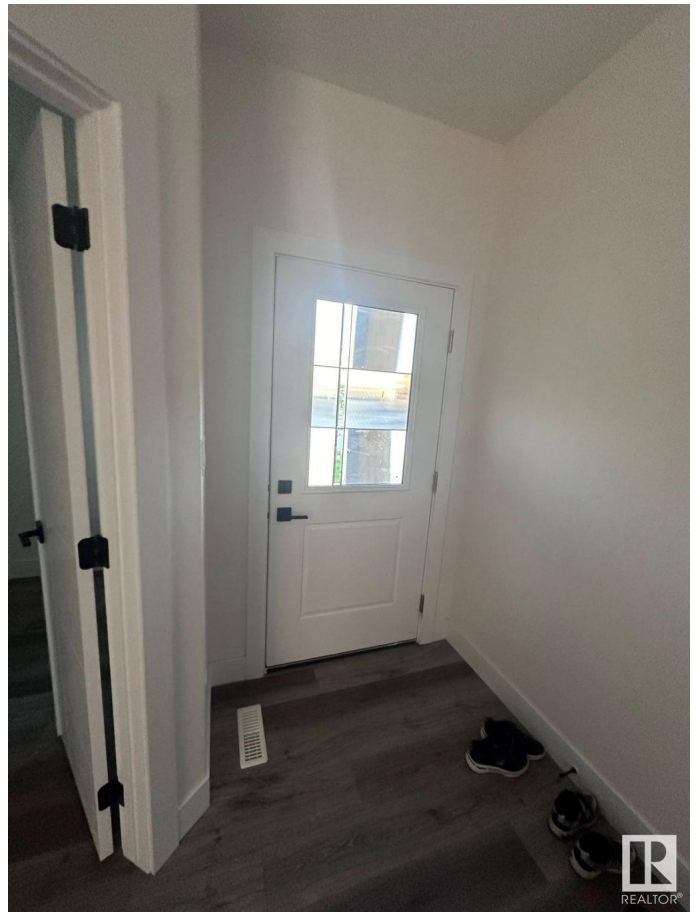
Exterior	Wood, Vinyl
Exterior Features	Airport Nearby, Playground Nearby, Schools, Shopping Nearby, See Remarks
Roof	Asphalt Shingles
Construction	Wood, Vinyl
Foundation	Concrete Perimeter

## Additional Information

Date Listed January 15th, 2025

Days on Market 85

Zoning Zone 56



DATA IS DEEMED RELIABLE BUT IS NOT GUARANTEED ACCURATE BY THE REALTORS<sup>®</sup> ASSOCIATION OF EDMONTON. COPYRIGHT 2025 BY THE REALTORS<sup>®</sup> ASSOCIATION OF EDMONTON. ALL RIGHTS RESERVED. Trademarks are owned or controlled by the Canadian Real Estate Association (CREA) and identify real estate professionals who are members of CREA (REALTOR<sup>®</sup>, REALTORS<sup>®</sup>) and/or the quality of services they provide (MLS<sup>®</sup>, Multiple Listing Service<sup>®</sup>)

Listing information last updated on April 10th, 2025 at 7:32pm MDT