

Courtesy Of Daryl J Appleton Of Real Broker

## \$875,000 - 2003 Ainslie Link Link, Edmonton

MLS® #E4419665

**\$875,000**

4 Bedroom, 3.50 Bathroom, 2,819 sqft  
Single Family on 0.00 Acres

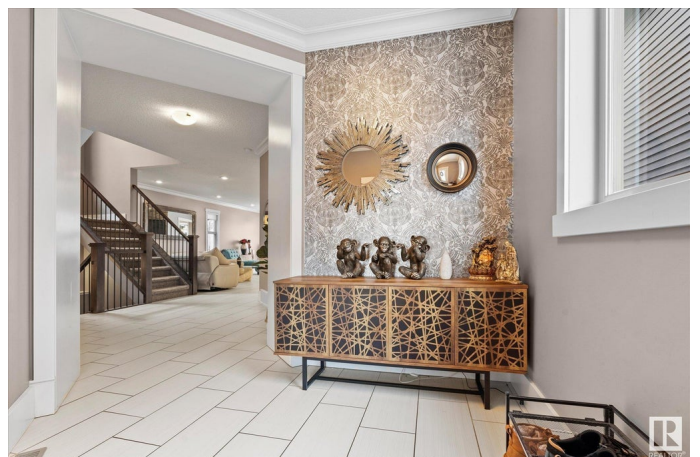
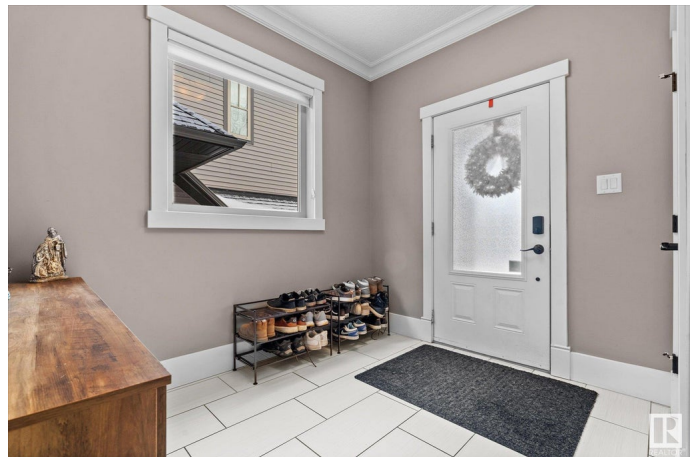
Ambleside, Edmonton, AB

Indulge in luxury living in Ambleside! This stunning 2800+ sq. ft. home offers 4 bedrooms, a den, 3.5 baths, and a fully finished basement, all while backing onto a peaceful walking path. The open main level features 9' ceilings, ceramic tile flooring throughout, an elegant brick-facing fireplace that warms the expansive living area, while the chef-inspired kitchen dazzles with quartz countertops, stainless steel appliances, and a gas range. Finishing this level is a 2 pace bath + mud room. Upstairs, the lavish primary retreat has its own fireplace, and includes a spa-like 5-piece ensuite and a walk-in closet. Completing this level is two more bedrooms, a large bonus room, and upper-floor laundry. The fully finished basement includes a rec room w/ bar, bedroom, den, and full bath with in-floor heating. Outdoors, enjoy low-maintenance luxury with artificial turf, a large composite deck, and a hot tub. Ideally located within walking distance of schools, shopping, and entertainment. Your dream home awaits!

Built in 2013

### Essential Information

|        |           |
|--------|-----------|
| MLS® # | E4419665  |
| Price  | \$875,000 |



|                |                        |
|----------------|------------------------|
| Bedrooms       | 4                      |
| Bathrooms      | 3.50                   |
| Full Baths     | 3                      |
| Half Baths     | 1                      |
| Square Footage | 2,819                  |
| Acres          | 0.00                   |
| Year Built     | 2013                   |
| Type           | Single Family          |
| Sub-Type       | Detached Single Family |
| Style          | 2 Storey               |
| Status         | Active                 |

### Community Information

|             |                        |
|-------------|------------------------|
| Address     | 2003 Ainslie Link Link |
| Area        | Edmonton               |
| Subdivision | Ambleside              |
| City        | Edmonton               |
| County      | ALBERTA                |
| Province    | AB                     |
| Postal Code | T6W 2M1                |

### Amenities

|           |  |
|-----------|--|
| Amenities | Air Conditioner, Ceiling 9 ft., Deck, No Animal Home, No Smoking Home, Vinyl Windows, HRV System, Natural Gas BBQ Hookup |
| Parking   | Double Garage Attached   |

### Interior

|                   |  |
|-------------------|--|
| Interior Features | ensuite bathroom   |
| Appliances        | Air Conditioning-Central, Dishwasher-Built-In, Dryer, Garage Control, Garage Opener, Hood Fan, Oven-Microwave, Refrigerator, Stove-Gas, Washer, Window Coverings, Wine/Beverage Cooler |
| Heating           | Forced Air-1, Natural Gas  |
| Fireplace         | Yes  |
| Fireplaces        | Double Sided, Stone Facing   |
| Stories           | 3  |
| Has Basement      | Yes  |
| Basement          | None, Finished   |

### Exterior

|                   |   |
|-------------------|---|
| Exterior          | Wood, Stone, Vinyl  |
| Exterior Features | Fenced, Flat Site, Golf Nearby, Low Maintenance Landscape, No Back Lane, Playground Nearby, Public Transportation, Schools, Shopping Nearby |
| Roof              | Asphalt Shingles  |
| Construction      | Wood, Stone, Vinyl  |
| Foundation        | Concrete Perimeter  |

### **Additional Information**

Date Listed January 30th, 2025

Days on Market 66

Zoning Zone 56

DATA IS DEEMED RELIABLE BUT IS NOT GUARANTEED ACCURATE BY THE REALTORS® ASSOCIATION OF EDMONTON. COPYRIGHT 2025 BY THE REALTORS® ASSOCIATION OF EDMONTON. ALL RIGHTS RESERVED. Trademarks are owned or controlled by the Canadian Real Estate Association (CREA) and identify real estate professionals who are members of CREA (REALTOR®, REALTORS®) and/or the quality of services they provide (MLS®, Multiple Listing Service®)

Listing information last updated on April 6th, 2025 at 2:02am MDT