

\$198,500 - 101 9908 114 Street, Edmonton

MLS® #E4420790

\$198,500

1 Bedroom, 1.00 Bathroom, 999 sqft
Condo / Townhouse on 0.00 Acres

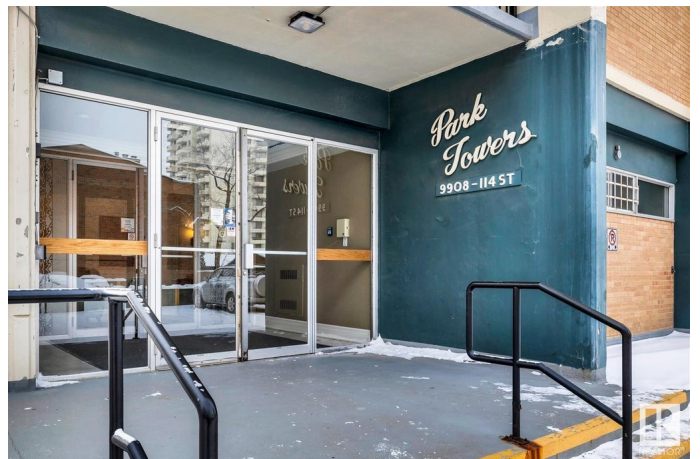
WÃ@hkwÃªntÃ´win, Edmonton, AB

Park Towers Located Above the Victoria Golf Course Premium Furnishings Included !1 Bedrooms 999 Square Ft. Located on the 2nd Floor with Spectacular Views of High Level Bridge, River Valley (South Balcony) City Views from the North Balcony. Turn Key Move In Unit Fully Furnished Well Appointed. Upgraded Kitchen Stainless Appliance Package. " Rainfall " Double Shower with River Rock Stone Accents, Ceramic Tile. Engineered Wood Flooring Open Plan Living Space, Flooded with Natural Light . Mechanical Building Upgrades, Elevators etc. Immaculate Building Amenities " Boutique Hotel Style " Social Room for Entertaining Well Appointed Gym Area , Salt Water Pool, Sauna to Keep you Trim!!Only 4 Units per Floor, Free Laundry down the Hall. Short Walk to All Services, Dining, Shopping, Medical, LRT 3 Blocks Away. On Site Building Manager Maintains the Integrity. Monthly Condominium Fee Inclusive of All Utilities. Immediate Availability. " Park Towers " 9908 - 114 St

Built in 1985

Essential Information

MLS® #	E4420790
Price	\$198,500
Bedrooms	1



Bathrooms	1.00
Full Baths	1
Square Footage	999
Acres	0.00
Year Built	1985
Type	Condo / Townhouse
Sub-Type	Apartment High Rise
Style	Single Level Apartment
Status	Active

Community Information

Address	101 9908 114 Street
Area	Edmonton
Subdivision	W&hkw&ant&win
City	Edmonton
County	ALBERTA
Province	AB
Postal Code	T5K 1R1

Amenities

Amenities	Exercise Room, Intercom, No Animal Home, No Smoking Home, Parking-Plug-Ins, Parking-Visitor, Party Room, Pool-Indoor, Sauna; Swirlpool; Steam, Security Door, Security Personnel
Parking Spaces	1
Parking	Stall, See Remarks
Has Pool	Yes

Interior

Appliances	Dishwasher-Built-In, Refrigerator, Stove-Electric, Window Coverings
Heating	Hot Water, Natural Gas
# of Stories	14
Stories	1
Has Basement	Yes
Basement	None, No Basement

Exterior

Exterior	Concrete, Brick
Exterior Features	Hillside, Park/Reserve, Public Transportation, River View, Shopping Nearby, View City

Roof	Asphalt Shingles
Construction	Concrete, Brick
Foundation	Concrete Perimeter

Additional Information

Date Listed	February 7th, 2025
Days on Market	60
Zoning	Zone 12
Condo Fee	\$1,122

DATA IS DEEMED RELIABLE BUT IS NOT GUARANTEED ACCURATE BY THE REALTORS® ASSOCIATION OF EDMONTON. COPYRIGHT 2025 BY THE REALTORS® ASSOCIATION OF EDMONTON. ALL RIGHTS RESERVED. Trademarks are owned or controlled by the Canadian Real Estate Association (CREA) and identify real estate professionals who are members of CREA (REALTOR®, REALTORS®) and/or the quality of services they provide (MLS®, Multiple Listing Service®)

Listing information last updated on April 7th, 2025 at 10:17pm MDT