

\$579,888 - 2910 10360 102 Street, Edmonton

MLS® #E4421017

\$579,888

2 Bedroom, 2.00 Bathroom, 930 sqft

Condo / Townhouse on 0.00 Acres

Downtown (Edmonton), Edmonton, AB

Visit the Listing Brokerage (and/or listing REALTOR®) website to obtain additional information. SPECTACULARLY WELL DESIGNED BRIGHT CORNER UNIT. The east facing floor to ceiling windows provide beautiful morning sun, while the south facing windows offer a stunning city view. Everything about this condo is first class from the top end Bosch appliances to the high-end interior finishing, such as engineered 5â€ plank hardwood flooring and quartz counter tops. This spacious 1159 SQFT condo is top of the line luxury, featuring east and south facing balconies, a separate den area, 2 beds each with their own full ensuite, an open concept living room, dining area and gourmet kitchen. The Legends Condo Building is all about LOCATION!! Situated on top of the JW Marriott hotel in the heart of Edmontonâ€™s Ice District, the building has convenient pedway access to a large grocery store, Rogers Place arena, and numerous restaurants and lounges.

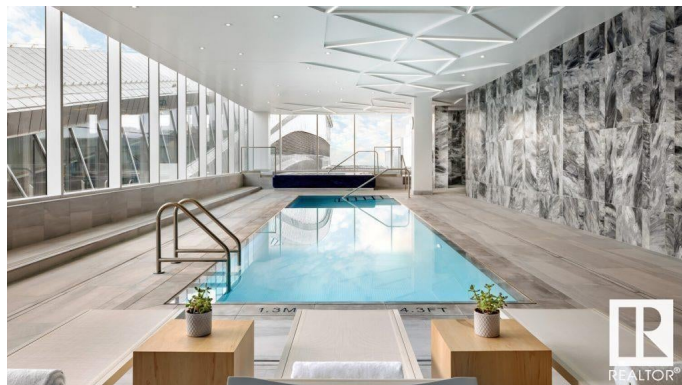
Built in 2017

Essential Information

MLS® # E4421017

Price \$579,888

Bedrooms 2



Bathrooms	2.00
Full Baths	2
Square Footage	930
Acres	0.00
Year Built	2017
Type	Condo / Townhouse
Sub-Type	Apartment High Rise
Style	Single Level Apartment
Status	Active

Community Information

Address	2910 10360 102 Street
Area	Edmonton
Subdivision	Downtown (Edmonton)
City	Edmonton
County	ALBERTA
Province	AB
Postal Code	T5J 0K6

Amenities

Amenities	Air Conditioner, Bar, Car Wash, Carbon Monoxide Detectors, Ceiling 9 ft., Deck, Exercise Room, Fire Pit, Hot Tub, No Animal Home, Parking-Plug-Ins, Parking-Visitor, Party Room, Patio, Pool-Indoor, Sauna; Swirlpool; Steam, Secured Parking, Security Door, Security Personnel
Parking Spaces	1
Parking	Underground
Has Pool	Yes

Interior

Interior Features	ensuite bathroom
Appliances	See Remarks
Heating	Fan Coil, Natural Gas
# of Stories	54
Stories	1
Has Basement	Yes
Basement	None, No Basement

Exterior

Exterior	Concrete, Metal
Exterior Features	Public Transportation, Shopping Nearby, See Remarks
Roof	EPDM Membrane
Construction	Concrete, Metal
Foundation	Concrete Perimeter

Additional Information

Date Listed	February 10th, 2025
Days on Market	180
Zoning	Zone 12
Condo Fee	\$1,102

DATA IS DEEMED RELIABLE BUT IS NOT GUARANTEED ACCURATE BY THE REALTORS® ASSOCIATION OF EDMONTON. COPYRIGHT 2025 BY THE REALTORS® ASSOCIATION OF EDMONTON. ALL RIGHTS RESERVED.Trademarks are owned or controlled by the Canadian Real Estate Association (CREA) and identify real estate professionals who are members of CREA (REALTOR®, REALTORS®) and/or the quality of services they provide (MLS®, Multiple Listing Service®)

Listing information last updated on August 9th, 2025 at 12:02am MDT