

\$382,900 - 23 6004 Rosenthal Way, Edmonton

MLS® #E4425054

\$382,900

3 Bedroom, 2.50 Bathroom, 1,496 sqft
Condo / Townhouse on 0.00 Acres

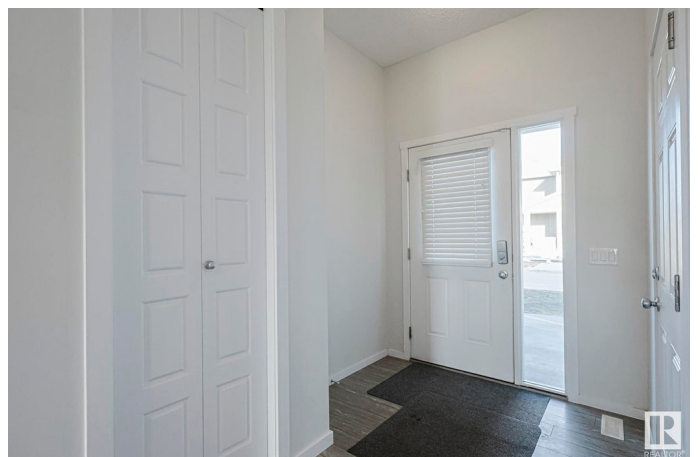
Rosenthal (Edmonton), Edmonton, AB

This gorgeous HALF DUPLEX is located in the condo complex of RENEW IN ROSENTHAL. When entering this home, you come to an OPEN CONCEPT LAYOUT with a large living room, dining area and a kitchen with BREAKFAST ISLAND and STAINLESS-STEEL appliances. The upper level has a large master bedroom featuring ENSUITE bathroom. There are an additional 2 spacious bedrooms, a full bathroom and UPPER-LEVEL LAUNDRY. This home comes with a FULLY FINISHED basement with a large RECREATIONAL ROOM. Enjoy the summers in the backyard featuring a deck and the convenience of a single ATTACHED GARAGE. This home is close to all amenities including shopping, COSTCO, restaurants, public transportation, schools, parks and major roadways like the WHITEMUD and ANTHONY HENDAY.

Built in 2017

Essential Information

MLS® #	E4425054
Price	\$382,900
Bedrooms	3
Bathrooms	2.50
Full Baths	2
Half Baths	1



Square Footage	1,496
Acres	0.00
Year Built	2017
Type	Condo / Townhouse
Sub-Type	Half Duplex
Style	2 Storey
Status	Active

Community Information

Address	23 6004 Rosenthal Way
Area	Edmonton
Subdivision	Rosenthal (Edmonton)
City	Edmonton
County	ALBERTA
Province	AB
Postal Code	T5T 7L1

Amenities

Amenities	Off Street Parking, Deck, Parking-Visitor, See Remarks
Parking	Single Garage Attached

Interior

Interior Features	ensuite bathroom
Appliances	Dishwasher-Built-In, Dryer, Oven-Microwave, Refrigerator, Stove-Electric, Washer
Heating	Forced Air-1, Natural Gas
Stories	3
Has Basement	Yes
Basement	Full, Finished

Exterior

Exterior	Wood, Vinyl
Exterior Features	Golf Nearby, Landscaped, Playground Nearby, Public Transportation, Schools, Shopping Nearby, See Remarks
Roof	Asphalt Shingles
Construction	Wood, Vinyl
Foundation	Concrete Perimeter

Additional Information

Date Listed	March 11th, 2025
Days on Market	25
Zoning	Zone 58
HOA Fees	115.5
HOA Fees Freq.	Annually
Condo Fee	\$234

DATA IS DEEMED RELIABLE BUT IS NOT GUARANTEED ACCURATE BY THE REALTORS® ASSOCIATION OF EDMONTON. COPYRIGHT 2025 BY THE REALTORS® ASSOCIATION OF EDMONTON. ALL RIGHTS RESERVED. Trademarks are owned or controlled by the Canadian Real Estate Association (CREA) and identify real estate professionals who are members of CREA (REALTOR®, REALTORS®) and/or the quality of services they provide (MLS®, Multiple Listing Service®)

Listing information last updated on April 4th, 2025 at 10:47pm MDT