

# \$299,000 - 3 6032 38 Avenue, Edmonton

MLS® #E4426612

**\$299,000**

2 Bedroom, 2.50 Bathroom, 972 sqft  
Condo / Townhouse on 0.00 Acres

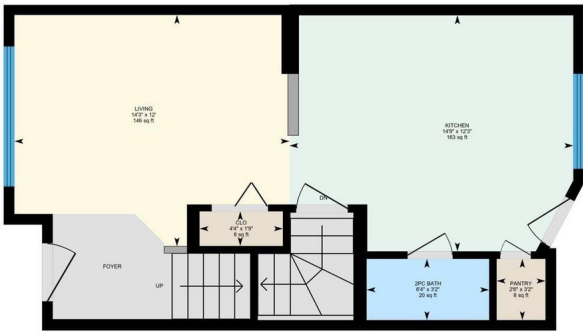
Greenview (Edmonton), Edmonton, AB

Charming Townhouse in Greenview â€“ Perfect Location! Welcome to this family-friendly townhouse in the sought-after community of Greenview! Nestled in a quiet neighborhood, yet just minutes from schools, parks, shopping, and major routes, this home offers the perfect balance of convenience and tranquility. With industrial employment centers nearby, commuting is easy while still enjoying the peace of a residential setting. Plus, a beautiful golf course is just minutes away, perfect for unwinding after a long day. Featuring a spacious layout and plenty of natural light, this home is ideal for families, first-time buyers, or investors. Whether you're looking for a cozy place to call home or a smart investment in a thriving neighborhood, Greenview is the perfect place to start. Don't miss out on a great opportunity



3-6032 38 Ave NW, Edmonton, AB

Main Floor Exterior Area 487.63 sq ft  
Interior Area 437.16 sq ft



0 3 6 ft PREPARED: 2025/03/20  
While regions are excluded from total floor area in GUIDE floor plans, All room dimensions and floor areas must be considered approximate and are subject to independent verification.

Built in 2010

## Essential Information

|                |           |
|----------------|-----------|
| MLS® #         | E4426612  |
| Price          | \$299,000 |
| Bedrooms       | 2         |
| Bathrooms      | 2.50      |
| Full Baths     | 2         |
| Half Baths     | 1         |
| Square Footage | 972       |

|            |                   |
|------------|-------------------|
| Acres      | 0.00              |
| Year Built | 2010              |
| Type       | Condo / Townhouse |
| Sub-Type   | Townhouse         |
| Style      | 2 Storey          |
| Status     | Active            |

### Community Information

|             |                      |
|-------------|----------------------|
| Address     | 3 6032 38 Avenue     |
| Area        | Edmonton             |
| Subdivision | Greenview (Edmonton) |
| City        | Edmonton             |
| County      | ALBERTA              |
| Province    | AB                   |
| Postal Code | T6L 0A4              |

### Amenities

|                |  |
|----------------|--|
| Amenities      | Ceiling 9 ft., Hot Water Natural Gas, Parking-Visitor, Vinyl Windows |
| Parking Spaces | 1  |
| Parking        | Stall  |

### Interior

|              |  |
|--------------|--|
| Appliances   | Dishwasher-Built-In, Dryer, Microwave Hood Fan, Refrigerator, Washer |
| Heating      | Forced Air-1, Natural Gas  |
| Stories      | 2  |
| Has Basement | Yes  |
| Basement     | Full, Finished   |

### Exterior

|                   |  |
|-------------------|--|
| Exterior          | Wood, Vinyl  |
| Exterior Features | Fenced, Flat Site, Landscaped, No Back Lane, Park/Reserve, Schools |
| Roof              | Asphalt Shingles   |
| Construction      | Wood, Vinyl  |
| Foundation        | Concrete Perimeter   |

### School Information

|            |                  |
|------------|------------------|
| Elementary | Greenview School |
| Middle     | Hillview School  |

### Additional Information

|                |                  |
|----------------|------------------|
| Date Listed    | March 20th, 2025 |
| Days on Market | 28               |
| Zoning         | Zone 29          |
| Condo Fee      | \$237            |

DATA IS DEEMED RELIABLE BUT IS NOT GUARANTEED ACCURATE BY THE REALTORS® ASSOCIATION OF EDMONTON. COPYRIGHT 2025 BY THE REALTORS® ASSOCIATION OF EDMONTON. ALL RIGHTS RESERVED. Trademarks are owned or controlled by the Canadian Real Estate Association (CREA) and identify real estate professionals who are members of CREA (REALTOR®, REALTORS®) and/or the quality of services they provide (MLS®, Multiple Listing Service®)

Listing information last updated on April 16th, 2025 at 9:17pm MDT