

Courtesy Of Christina A Reid Of Century 21 Leading

\$605,500 - 2321 158a Street, Edmonton

MLS® #E4427730

\$605,500

3 Bedroom, 2.50 Bathroom, 1,741 sqft
Single Family on 0.00 Acres

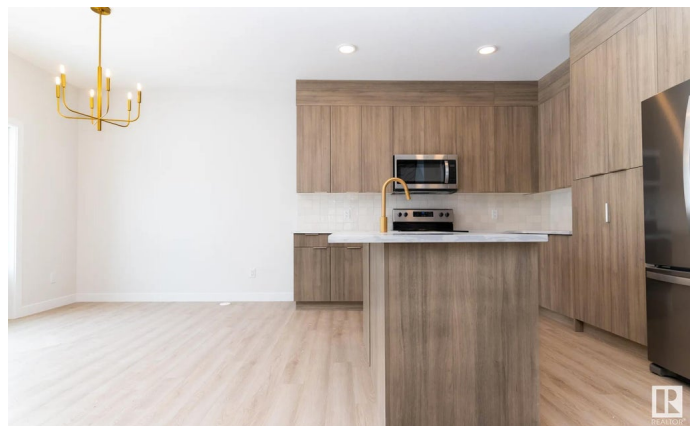
Glenridding Ravine, Edmonton, AB

Welcome to the Himalayan Fir™ a home that's perfect for families seeking a blend of comfort and style. With 3 spacious bedrooms and 2.5 modern bathrooms, there's plenty of room for everyone to relax and unwind. Step inside to discover an airy, open-concept layout that flows effortlessly from room to room, creating a welcoming atmosphere for both everyday living and entertaining. The kitchen, designed with family gatherings in mind, boasts ample counter space and a cozy dining area. Upstairs, you'll find the perfect retreat in the primary suite, complete with a luxurious ensuite and generous closet space. The additional bedrooms are ideal for kids, guests, or a home office. Side entry gives future basement suite potential.

Built in 2024

Essential Information

MLS® #	E4427730
Price	\$605,500
Bedrooms	3
Bathrooms	2.50
Full Baths	2
Half Baths	1
Square Footage	1,741
Acres	0.00



Year Built	2024
Type	Single Family
Sub-Type	Detached Single Family
Style	2 Storey
Status	Active

Community Information

Address	2321 158a Street
Area	Edmonton
Subdivision	Glenridding Ravine
City	Edmonton
County	ALBERTA
Province	AB
Postal Code	T6W 4L1

Amenities

Amenities	Carbon Monoxide Detectors, Detectors Smoke, Hot Water Tankless, Smart/Program. Thermostat, HRV System
Parking	Double Garage Attached

Interior

Interior Features	ensuite bathroom
Appliances	Dishwasher-Built-In, Dryer, Garage Control, Garage Opener, Microwave Hood Fan, Refrigerator, Stove-Electric, Washer
Heating	Forced Air-1, Natural Gas
Fireplace	Yes
Fireplaces	Insert
Stories	2
Has Basement	Yes
Basement	Full, Unfinished

Exterior

Exterior	Prefab, Vinyl
Exterior Features	Airport Nearby, Golf Nearby, Playground Nearby, Public Transportation, Schools, Shopping Nearby
Roof	Asphalt Shingles
Construction	Prefab, Vinyl
Foundation	Concrete Perimeter

School Information

Elementary	GEORGE H. LUCK
Middle	RIVERBEND
High	STRATHCONA

Additional Information

Date Listed March 27th, 2025

Days on Market 12

Zoning Zone 56

DATA IS DEEMED RELIABLE BUT IS NOT GUARANTEED ACCURATE BY THE REALTORS® ASSOCIATION OF EDMONTON. COPYRIGHT 2025 BY THE REALTORS® ASSOCIATION OF EDMONTON. ALL RIGHTS RESERVED. Trademarks are owned or controlled by the Canadian Real Estate Association (CREA) and identify real estate professionals who are members of CREA (REALTOR®, REALTORS®) and/or the quality of services they provide (MLS®, Multiple Listing Service®)

Listing information last updated on April 8th, 2025 at 7:02am MDT