

\$349,000 - 47 1391 Starling Drive, Edmonton

MLS® #E4427972

\$349,000

3 Bedroom, 2.50 Bathroom, 1,674 sqft
Condo / Townhouse on 0.00 Acres

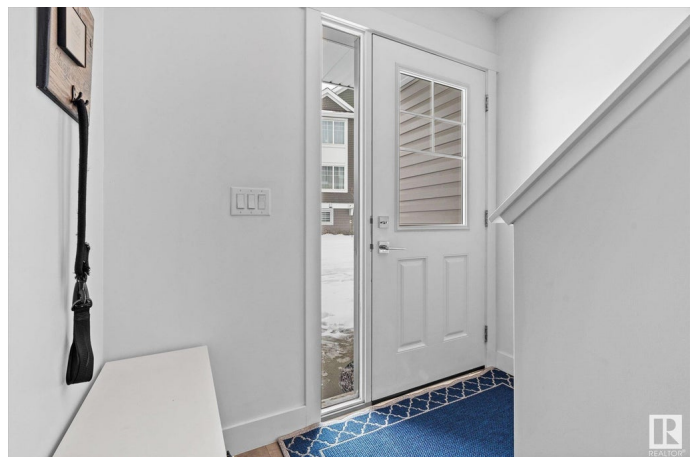
Starling, Edmonton, AB

Welcome home to this bright and spacious 3 bedroom, 2.5 bath home built in 2018 in the gorgeous community of Starling. With over 1670 of sq/ft of living space, the open concept main floor has a spacious living room, 1/2 bath and bright kitchen features quartz countertops, large pantry, SS appliances and eat-in counter bar. Upstairs has 2 bedrooms, linen storage and a 4pc bathroom. The large primary with his & hers closets also has a 4pc ensuite! Lower level has mechanical, laundry and double tandem garage. Triple pane windows throughout! Your south facing terrace is perfect for a BBQ (with gas line), a patio set to enjoy a morning coffee or to grow fresh tomatoes! Perfect for investors or first time home buyers, this location is fantastic, with close proximity to St. Albert, Edmonton and 10 minutes to Spruce Grove. A must see!

Built in 2018

Essential Information

| | |
|----------------|-----------|
| MLS® # | E4427972 |
| Price | \$349,000 |
| Bedrooms | 3 |
| Bathrooms | 2.50 |
| Full Baths | 2 |
| Half Baths | 1 |
| Square Footage | 1,674 |



| | |
|------------|-------------------|
| Acres | 0.00 |
| Year Built | 2018 |
| Type | Condo / Townhouse |
| Sub-Type | Townhouse |
| Style | 2 Storey |
| Status | Active |

Community Information

| | |
|-------------|------------------------|
| Address | 47 1391 Starling Drive |
| Area | Edmonton |
| Subdivision | Starling |
| City | Edmonton |
| County | ALBERTA |
| Province | AB |
| Postal Code | T5S 0L3 |

Amenities

| | |
|-----------|--------------------------------|
| Amenities | Deck |
| Parking | Double Garage Attached, Tandem |

Interior

| | |
|-------------------|--|
| Interior Features | ensuite bathroom |
| Appliances | Dishwasher-Built-In, Dryer, Microwave Hood Fan, Refrigerator, Stove-Electric, Washer, Window Coverings |
| Heating | Forced Air-1, Natural Gas |
| Stories | 3 |
| Has Basement | Yes |
| Basement | Full, Finished |

Exterior

| | |
|-------------------|---|
| Exterior | Wood, Stone, Vinyl |
| Exterior Features | Environmental Reserve, Landscaped, Park/Reserve |
| Roof | Asphalt Shingles |
| Construction | Wood, Stone, Vinyl |
| Foundation | Concrete Perimeter |

School Information

| | |
|------------|--------------------------|
| Elementary | David Thomas King School |
| Middle | David Thomas King School |

High Jasper Place School

Additional Information

Date Listed March 28th, 2025

Days on Market 6

Zoning Zone 59

Condo Fee \$273

DATA IS DEEMED RELIABLE BUT IS NOT GUARANTEED ACCURATE BY THE REALTORS® ASSOCIATION OF EDMONTON. COPYRIGHT 2025 BY THE REALTORS® ASSOCIATION OF EDMONTON. ALL RIGHTS RESERVED. Trademarks are owned or controlled by the Canadian Real Estate Association (CREA) and identify real estate professionals who are members of CREA (REALTOR®, REALTORS®) and/or the quality of services they provide (MLS®, Multiple Listing Service®)

Listing information last updated on April 3rd, 2025 at 7:47pm MDT