

# \$245,000 - 226 344 Windermere Road, Edmonton

MLS® #E4428154

## \$245,000

2 Bedroom, 2.00 Bathroom, 932 sqft  
Condo / Townhouse on 0.00 Acres

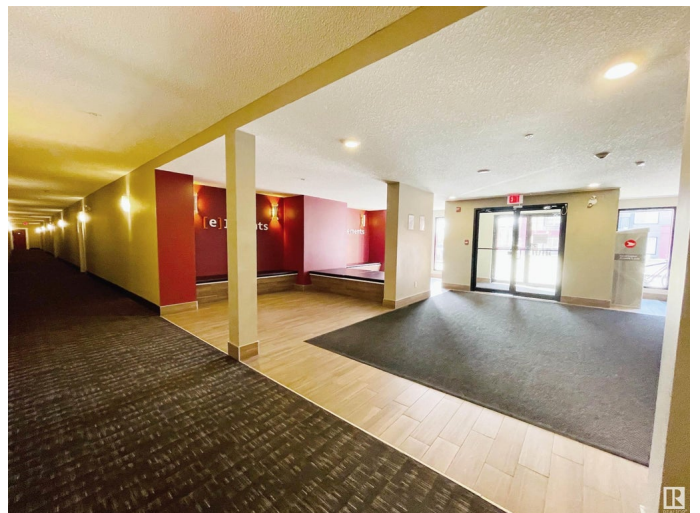
Windermere, Edmonton, AB

One of the biggest floorplan 932 Sqft provide enough living and storage space! 2 beds 2 baths, Excellent Windermere location close to all amenities, shopping, schools, and easy access to Anthony Henday! The spacious and open floor plan features a kitchen and big walk in storage pantry. Big living room leads you to the big balcony. The great floor plan with bedrooms on opposite sides of the unit. Large master features a huge walk-through closet and 4-piece ensuite and extra large linen closet. Second bedroom and additional 4-piece bath. In suite laundry and plenty of storage. 2 TITLED PARKING STALLS is great for value and convenience. Call Elements home today!

Built in 2014

### Essential Information

MLS® #	E4428154
Price	\$245,000
Bedrooms	2
Bathrooms	2.00
Full Baths	2
Square Footage	932
Acres	0.00
Year Built	2014
Type	Condo / Townhouse



Sub-Type	Lowrise Apartment
Style	Single Level Apartment
Status	Active

### **Community Information**

Address	226 344 Windermere Road
Area	Edmonton
Subdivision	Windermere
City	Edmonton
County	ALBERTA
Province	AB
Postal Code	T6W 2P2

### **Amenities**

Amenities	See Remarks
Parking Spaces	2
Parking	Stall, Underground

### **Interior**

Interior Features	ensuite bathroom
Appliances	Dishwasher-Built-In, Dryer, Microwave Hood Fan, Stove-Electric, Washer
Heating	Hot Water, Natural Gas
# of Stories	4
Stories	1
Has Basement	Yes
Basement	None, No Basement

### **Exterior**

Exterior	Wood, Stucco, Vinyl
Exterior Features	Airport Nearby, Schools, Shopping Nearby
Roof	EPDM Membrane
Construction	Wood, Stucco, Vinyl
Foundation	Concrete Perimeter

### **Additional Information**

Date Listed	March 29th, 2025
Days on Market	5
Zoning	Zone 56

Condo Fee            \$533

DATA IS DEEMED RELIABLE BUT IS NOT GUARANTEED ACCURATE BY THE REALTORS® ASSOCIATION OF EDMONTON. COPYRIGHT 2025 BY THE REALTORS® ASSOCIATION OF EDMONTON. ALL RIGHTS RESERVED. Trademarks are owned or controlled by the Canadian Real Estate Association (CREA) and identify real estate professionals who are members of CREA (REALTOR®, REALTORS®) and/or the quality of services they provide (MLS®, Multiple Listing Service®)

Listing information last updated on April 2nd, 2025 at 11:02pm MDT