

\$185,000 - N/A, Edmonton

MLS® #E4428235

\$185,000

2 Bedroom, 2.00 Bathroom, 857 sqft
Condo / Townhouse on 0.00 Acres

Strathcona, Edmonton, AB

Two bedrooms both with ensuite located on Saskatchewan Dr. Enjoy the river and downtown view plus fire works on Canada day. Property manager on site. Night time security from 10pm to 6am. Transportation nearby. Minutes to downtown, U of A, Millcreek ravine and Whyte Avenue. Well maintain building with exercise room. One assigned covered parking. Quick possession available.

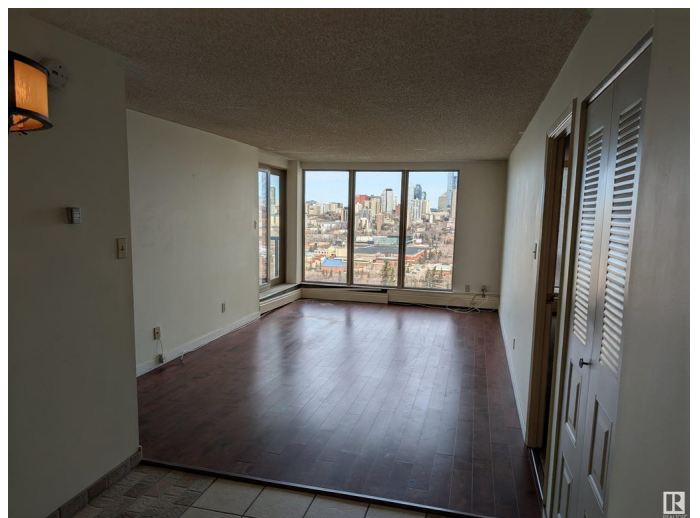
Built in 1981

Essential Information

MLS® #	E4428235
Price	\$185,000
Bedrooms	2
Bathrooms	2.00
Full Baths	2
Square Footage	857
Acres	0.00
Year Built	1981
Type	Condo / Townhouse
Sub-Type	Apartment High Rise
Style	Single Level Apartment
Status	Active

Community Information

Address	N/A
Area	Edmonton



Subdivision	Strathcona
City	Edmonton
County	ALBERTA
Province	AB
Postal Code	T6E 6B6

Amenities

Amenities	Exercise Room, Intercom, Parking-Visitor
Parking	Parkade, Stall

Interior

Interior Features	ensuite bathroom
Appliances	Dishwasher-Built-In, Refrigerator, Stove-Electric
Heating	Baseboard, Hot Water, Natural Gas
# of Stories	20
Stories	1
Has Basement	Yes
Basement	None, No Basement

Exterior

Exterior	Concrete, Stucco
Exterior Features	Landscaped
Roof	Tar & Gravel
Construction	Concrete, Stucco
Foundation	Concrete Perimeter

Additional Information

Date Listed	March 28th, 2025
Days on Market	6
Zoning	Zone 15
Condo Fee	\$717

DATA IS DEEMED RELIABLE BUT IS NOT GUARANTEED ACCURATE BY THE REALTORS® ASSOCIATION OF EDMONTON. COPYRIGHT 2025 BY THE REALTORS® ASSOCIATION OF EDMONTON. ALL RIGHTS RESERVED. Trademarks are owned or controlled by the Canadian Real Estate Association (CREA) and identify real estate professionals who are members of CREA (REALTOR®, REALTORS®) and/or the quality of services they provide (MLS®, Multiple Listing Service®)

Listing information last updated on April 2nd, 2025 at 9:47pm MDT