

\$169,900 - 303 10710 116 Street, Edmonton

MLS® #E4433593

\$169,900

2 Bedroom, 1.00 Bathroom, 750 sqft

Condo / Townhouse on 0.00 Acres

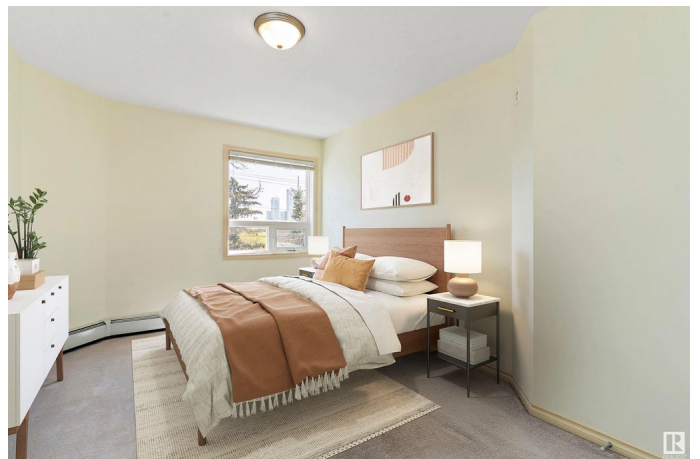
Queen Mary Park, Edmonton, AB

Welcome to Churchill West a well-maintained, 3rd-floor condo in an adult-only building in Queen Mary Park. This East facing unit offers downtown views and features an open layout, gas fireplace, 2 spacious bedrooms, in-suite laundry, and a 4-pc bathroom. Located just minutes from 124th Street, Brewery District, MacEwan, Rogers Place, and the future Valley West LRT station. Condo fees cover heat and water, and 1 powered parking stall is included. Pets allowed with approval. Ideal for students or first-time buyers. Quick possession available!

Built in 2012

Essential Information

MLS® #	E4433593
Price	\$169,900
Bedrooms	2
Bathrooms	1.00
Full Baths	1
Square Footage	750
Acres	0.00
Year Built	2012
Type	Condo / Townhouse
Sub-Type	Lowrise Apartment
Style	Single Level Apartment
Status	Active



Community Information

Address	303 10710 116 Street
Area	Edmonton
Subdivision	Queen Mary Park
City	Edmonton
County	ALBERTA
Province	AB
Postal Code	T5H 3M2

Amenities

Amenities	Intercom, Parking-Plug-Ins, Parking-Visitor, Patio, Vinyl Windows
Parking Spaces	1
Parking	Stall

Interior

Appliances	Dishwasher-Built-In, Dryer, Refrigerator, Stove-Electric, Washer, Window Coverings
Heating	Baseboard, Hot Water, Natural Gas
# of Stories	4
Stories	1
Has Basement	Yes
Basement	None, No Basement

Exterior

Exterior	Wood, Vinyl
Exterior Features	Landscaped, Playground Nearby, Public Transportation, Schools, Shopping Nearby, View City, View Downtown
Roof	Asphalt Shingles
Construction	Wood, Vinyl
Foundation	Concrete Perimeter

Additional Information

Date Listed	May 1st, 2025
Days on Market	94
Zoning	Zone 08
Condo Fee	\$462

DATA IS DEEMED RELIABLE BUT IS NOT GUARANTEED ACCURATE BY THE REALTORS® ASSOCIATION OF EDMONTON. COPYRIGHT 2025 BY THE REALTORS® ASSOCIATION OF EDMONTON. ALL RIGHTS RESERVED. Trademarks are owned or controlled by the Canadian Real Estate Association (CREA) and identify real estate professionals who are members of CREA (REALTOR®, REALTORS®) and/or the quality of services they

provide (MLS®®, Multiple Listing Service®®)
Listing information last updated on August 3rd, 2025 at 10:17am MDT