

\$739,997 - 275 Glenridding Ravine Road, Edmonton

MLS® #E4434189

\$739,997

3 Bedroom, 2.50 Bathroom, 2,589 sqft

Single Family on 0.00 Acres

Glenridding Ravine, Edmonton, AB

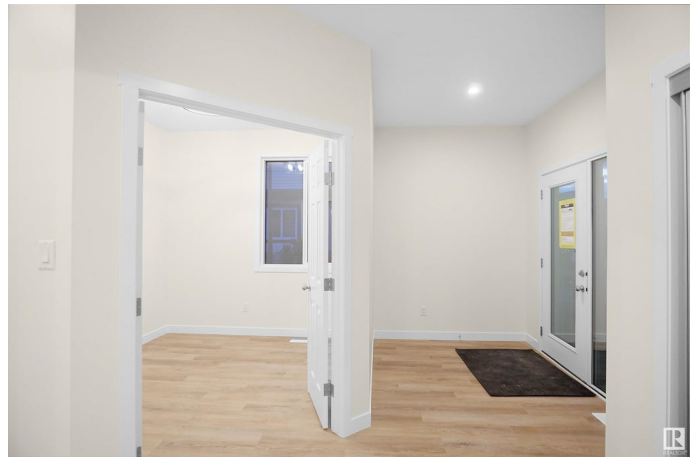
*** RAVINE BACKING + MASSIVE YARD ***

This is your last chance to own this beautiful "Secretariat" built by the award winning Pacesetter homes and is located on a quiet street in the heart of Glenridding Ravine. This unique property in Glenridding Ravine offers nearly 2600 sq ft of living space. The main floor features a large front entrance which has a large flex room next to it which can be used a bedroom/ office or even a second living room if needed, as well as an open kitchen with quartz counters, and a large corner pantry that is open to the kitchen across from the large great room with 18 foot ceilings that is open to below. Large windows allow natural light to pour in throughout the house. Upstairs you'll find 3 bedrooms and a good sized bonus room. This is the perfect place to call home and is located just steps from all amenities. *** Home is under construction and will be complete by the end of this month. The photos used are from the same layout home recently built but colors may vary***

Built in 2024

Essential Information

MLS® #	E4434189
Price	\$739,997
Bedrooms	3



Bathrooms	2.50
Full Baths	2
Half Baths	1
Square Footage	2,589
Acres	0.00
Year Built	2024
Type	Single Family
Sub-Type	Detached Single Family
Style	2 Storey
Status	Active

Community Information

Address	275 Glenridding Ravine Road
Area	Edmonton
Subdivision	Glenridding Ravine
City	Edmonton
County	ALBERTA
Province	AB
Postal Code	T6W 5C3

Amenities

Amenities	See Remarks
Parking	Double Garage Attached

Interior

Interior Features	ensuite bathroom
Appliances	Garage Control, Garage Opener, See Remarks
Heating	Forced Air-1, Natural Gas
Stories	2
Has Basement	Yes
Basement	Full, Unfinished

Exterior

Exterior	Wood, Stone, Vinyl
Exterior Features	Backs Onto Park/Trees, Golf Nearby, Park/Reserve, Playground Nearby, Public Swimming Pool, Public Transportation, Ravine View, Schools, Shopping Nearby, See Remarks
Roof	Asphalt Shingles
Construction	Wood, Stone, Vinyl

Foundation Concrete Perimeter

Additional Information

Date Listed May 1st, 2025

Days on Market 21

Zoning Zone 56

DATA IS DEEMED RELIABLE BUT IS NOT GUARANTEED ACCURATE BY THE REALTORS® ASSOCIATION OF EDMONTON. COPYRIGHT 2025 BY THE REALTORS® ASSOCIATION OF EDMONTON. ALL RIGHTS RESERVED.Trademarks are owned or controlled by the Canadian Real Estate Association (CREA) and identify real estate professionals who are members of CREA (REALTOR®, REALTORS®) and/or the quality of services they provide (MLS®, Multiple Listing Service®)

Listing information last updated on May 21st, 2025 at 11:32pm MDT