

\$464,800 - 73 Springwood Way, Spruce Grove

MLS® #E4434697

\$464,800

4 Bedroom, 2.50 Bathroom, 1,582 sqft

Single Family on 0.00 Acres

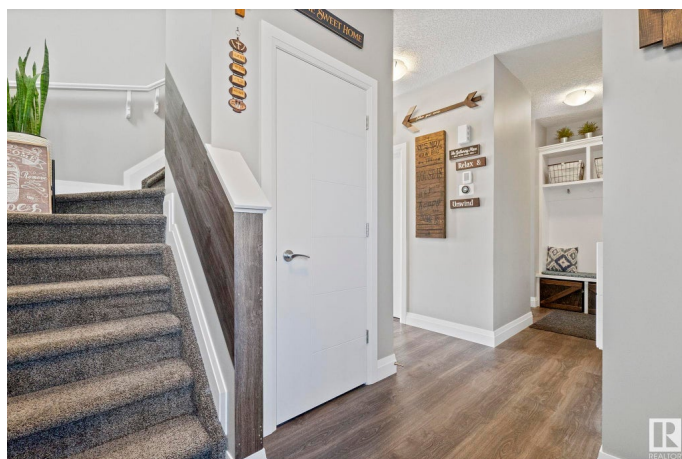
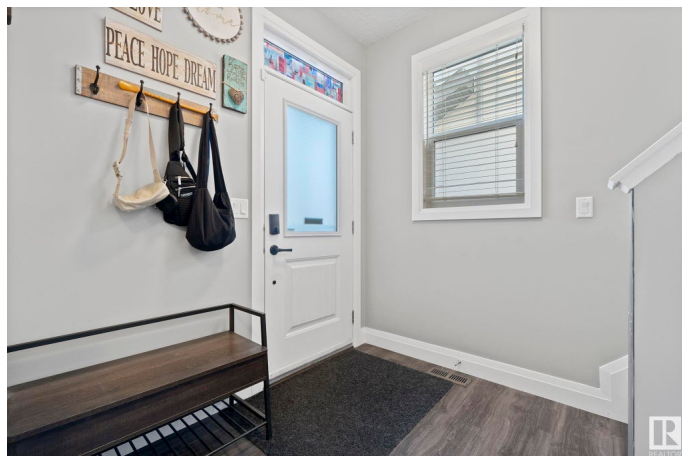
Spruce Ridge, Spruce Grove, AB

Welcome to a beautifully maintained home that combines comfort, style, and smart design. The functional layout offers three bedrooms upstairs, including a primary suite with a walk-in closet and an ensuite featuring his and hers sinks. A bonus room adds versatility perfect for a home office, playroom, or lounge. Downstairs, the finished basement extends your living space with a cozy family room, fourth bedroom, and a rough-in for a future washroom—ready to customize. This home includes a central AC unit for year-round comfort. Triple-pane windows enhance energy efficiency, while new Astoria lighting on the front and side of the home adds a sleek, modern touch. Extra windows on the staircase bring in more natural light, and upgraded light fixtures throughout add a refined finish. Step outside to a beautifully landscaped backyard with a charming gazebo, perfect for outdoor dining or quiet evenings. This is a home that's been thoughtfully cared for, with many upgrades ready for you to move in.

Built in 2015

Essential Information

MLS® #	E4434697
Price	\$464,800
Bedrooms	4



Bathrooms	2.50
Full Baths	2
Half Baths	1
Square Footage	1,582
Acres	0.00
Year Built	2015
Type	Single Family
Sub-Type	Half Duplex
Style	2 Storey
Status	Active

Community Information

Address	73 Springwood Way
Area	Spruce Grove
Subdivision	Spruce Ridge
City	Spruce Grove
County	ALBERTA
Province	AB
Postal Code	T7X 0S8

Amenities

Amenities	Air Conditioner, Ceiling 9 ft., Deck, Detectors Smoke, Gazebo, HRV System, 9 ft. Basement Ceiling
Parking	Double Garage Attached

Interior

Interior Features	ensuite bathroom
Appliances	Dishwasher-Built-In, Dryer, Microwave Hood Fan, Refrigerator, Stove-Electric, Washer
Heating	Forced Air-1, Natural Gas
Stories	3
Has Basement	Yes
Basement	Full, Finished

Exterior

Exterior	Wood, Vinyl
Exterior Features	Fenced, Golf Nearby, Landscaped, Public Transportation
Roof	Asphalt Shingles
Construction	Wood, Vinyl

Foundation Concrete Perimeter

Additional Information

Date Listed May 6th, 2025

Days on Market 16

Zoning Zone 91

DATA IS DEEMED RELIABLE BUT IS NOT GUARANTEED ACCURATE BY THE REALTORS® ASSOCIATION OF EDMONTON. COPYRIGHT 2025 BY THE REALTORS® ASSOCIATION OF EDMONTON. ALL RIGHTS RESERVED.Trademarks are owned or controlled by the Canadian Real Estate Association (CREA) and identify real estate professionals who are members of CREA (REALTOR®, REALTORS®) and/or the quality of services they provide (MLS®, Multiple Listing Service®)

Listing information last updated on May 22nd, 2025 at 9:18am MDT