

\$698,000 - 10409 87 Avenue, Edmonton

MLS® #E4435200

\$698,000

5 Bedroom, 3.50 Bathroom, 1,475 sqft

Single Family on 0.00 Acres

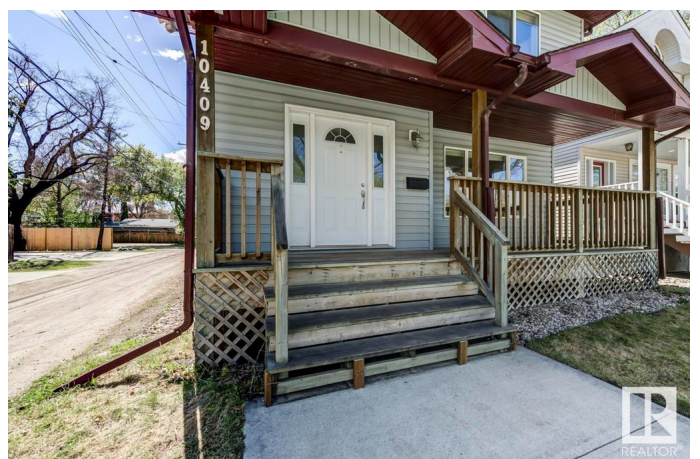
Strathcona, Edmonton, AB

Rare Find in Old Strathcona! Nestled on a picturesque, tree-lined street, this 1,475 sq.ft 2-storey home built in 2002 perfectly blends charm with location. Just steps to Whyte Ave, U of A, River Valley, farmers market & Saskatchewan Dr! Inside, enjoy 5 bdrms, 3.5 baths, bright open main floor featuring newer flooring, & a stylish kitchen w/ newer counters, corner pantry & a functional mudroom leading to a sunny south-facing backyard. The upstairs primary retreat boasts large windows, walk-in closet + 3 PC ensuite. Two more bdrms & a 4-pc bath complete the upper level. The fully finished bsmt is perfect for entertaining, w/ a spacious rec rm, 2 additional bdrms, & 3-pc bathroom featuring tiled walk-in shower. With A/C for year-round comfort & convenient double garage, this is urban living at its finest! Whether you're looking to invest (PROPERTY RENTED FOR \$3900/MONTH), grow your family, or live in one of Edmonton's most vibrant neighbourhoods, this home offers unmatched value, lifestyle, & walkability!

Built in 2002

Essential Information

MLS® #	E4435200
Price	\$698,000
Bedrooms	5



Bathrooms	3.50
Full Baths	3
Half Baths	1
Square Footage	1,475
Acres	0.00
Year Built	2002
Type	Single Family
Sub-Type	Detached Single Family
Style	2 Storey
Status	Active

Community Information

Address	10409 87 Avenue
Area	Edmonton
Subdivision	Strathcona
City	Edmonton
County	ALBERTA
Province	AB
Postal Code	T6E 2P4

Amenities

Amenities	Air Conditioner, Deck, Detectors Smoke, Front Porch
Parking	Double Garage Detached

Interior

Interior Features	ensuite bathroom
Appliances	Dishwasher-Built-In, Dryer, Microwave Hood Fan, Refrigerator, Stove-Electric, Washer, Window Coverings
Heating	Forced Air-1, Natural Gas
Stories	3
Has Basement	Yes
Basement	Full, Finished

Exterior

Exterior	Wood, Vinyl
Exterior Features	Back Lane, Fenced, Golf Nearby, Landscaped, Park/Reserve, Public Transportation, Schools, Shopping Nearby, Ski Hill Nearby
Roof	Asphalt Shingles
Construction	Wood, Vinyl

Foundation Concrete Perimeter

Additional Information

Date Listed May 8th, 2025

Days on Market 16

Zoning Zone 15

DATA IS DEEMED RELIABLE BUT IS NOT GUARANTEED ACCURATE BY THE REALTORS® ASSOCIATION OF EDMONTON. COPYRIGHT 2025 BY THE REALTORS® ASSOCIATION OF EDMONTON. ALL RIGHTS RESERVED.Trademarks are owned or controlled by the Canadian Real Estate Association (CREA) and identify real estate professionals who are members of CREA (REALTOR®, REALTORS®) and/or the quality of services they provide (MLS®, Multiple Listing Service®)

Listing information last updated on May 24th, 2025 at 12:17pm MDT