

# **\$375,000 - 516 5151 Windermere Boulevard, Edmonton**

MLS® #E4435466

**\$375,000**

2 Bedroom, 2.00 Bathroom, 1,023 sqft

Condo / Townhouse on 0.00 Acres

Ambleside, Edmonton, AB

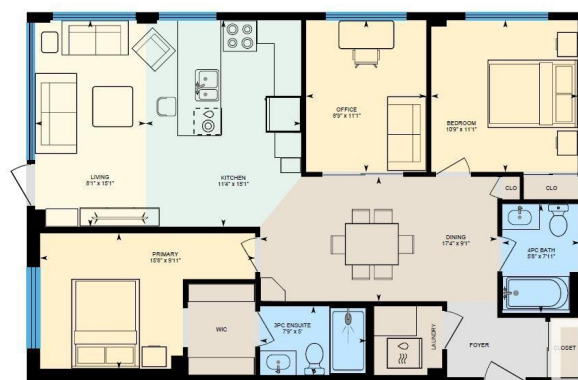
Executive Corner Unit. 2 Bedrooms (master bedroom has ensuite bathroom), 2 Bathrooms, large Den/Office, large dining room area. Corner unit has lots of natural light. Nice size kitchen. Living room has lots of glass and access to a very large patio/deck which is covered with roof above, so you can enjoy sitting outside, even when it is raining. Patio deck faces West, but you can see the south pond area. Condo comes with one Titled Parking Stall. Very nice layout and well kept. Floorplan is in photos.

Built in 2015



516-5151 Windermere Blvd, Edmonton, AB

Main Floor Interior Area 1023.36 sq ft



## **Essential Information**

MLS® #	E4435466
Price	\$375,000
Bedrooms	2
Bathrooms	2.00
Full Baths	2
Square Footage	1,023
Acres	0.00
Year Built	2015
Type	Condo / Townhouse
Sub-Type	Apartment High Rise
Style	Single Level Apartment
Status	Active

## **Community Information**

Address	516 5151 Windermere Boulevard
Area	Edmonton
Subdivision	Ambleside
City	Edmonton
County	ALBERTA
Province	AB
Postal Code	T6W 2K4

### **Amenities**

Amenities	Ceiling 9 ft.
Parking Spaces	1
Parking	Heated, Underground
Is Waterfront	Yes

### **Interior**

Interior Features	ensuite bathroom
Appliances	Dishwasher-Built-In, Dryer, Microwave Hood Fan, Refrigerator, Stove-Electric, Washer, Window Coverings
Heating	Heat Pump, Natural Gas
# of Stories	8
Stories	1
Has Basement	Yes
Basement	None, No Basement

### **Exterior**

Exterior	Concrete, Composition
Exterior Features	Backs Onto Lake
Roof	Flat, Tar & Gravel
Construction	Concrete, Composition
Foundation	Concrete Perimeter

### **Additional Information**

Date Listed	May 3rd, 2025
Days on Market	75
Zoning	Zone 56
HOA Fees	50
HOA Fees Freq.	Annually
Condo Fee	\$641

DATA IS DEEMED RELIABLE BUT IS NOT GUARANTEED ACCURATE BY THE REALTORS® ASSOCIATION OF

EDMONTON. COPYRIGHT 2025 BY THE REALTORS® ASSOCIATION OF EDMONTON. ALL RIGHTS RESERVED.Trademarks are owned or controlled by the Canadian Real Estate Association (CREA) and identify real estate professionals who are members of CREA (REALTOR®, REALTORS®) and/or the quality of services they provide (MLS®, Multiple Listing Service®)

Listing information last updated on July 16th, 2025 at 9:47pm MDT