

## \$139,900 - 220 151 Edwards Drive, Edmonton

MLS® #E4436402

**\$139,900**

1 Bedroom, 1.00 Bathroom, 638 sqft

Condo / Townhouse on 0.00 Acres

Ellerslie, Edmonton, AB

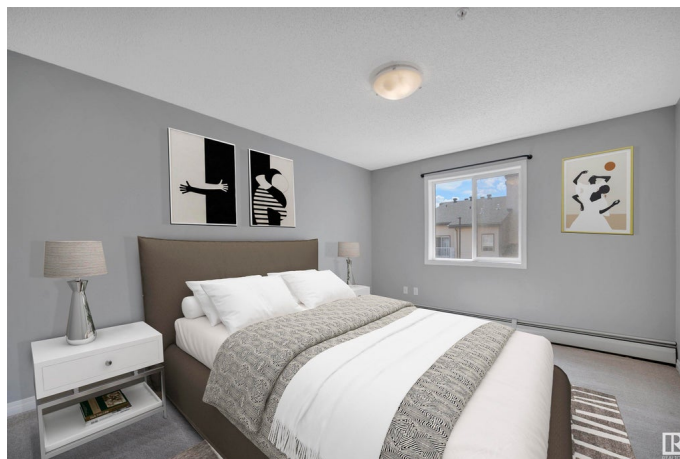
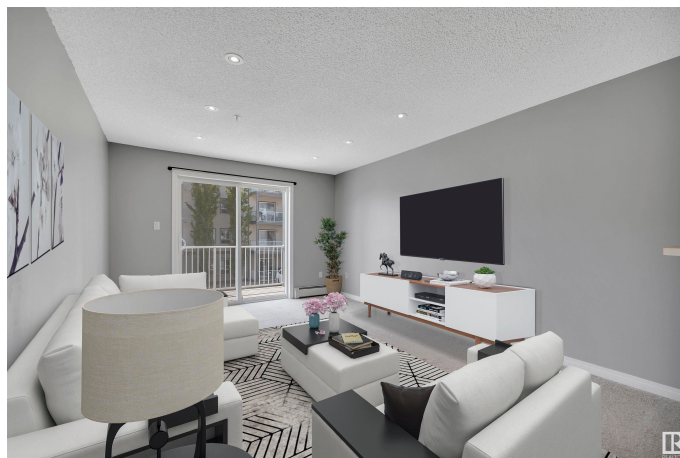
**BUDGET FRIENDLY! PRIDE OF OWNERSHIP! IMMEDIATE POSSESSION!**

This 638 sq ft 1 bed, 1 bath suite is perfect for the first time buyer or investor! Newer paint, white shaker cabinets, carpet & lino flooring, covered deck, & in suite laundry! 4 pce bathroom, storage room & space for your large couch or sectional! Surface parking stall outside the entryway make parking convenient. Gym area too to burn off some calories! Condo fees of \$423.34 a month includes heat, water/sewer, professional management, etc. Located in desirable Ellerslie only blocks to shopping, restaurants, & quick access to the Henday make the location a winner! \*Some photos have been virtually staged\*

Built in 2005

### Essential Information

MLS® #	E4436402
Price	\$139,900
Bedrooms	1
Bathrooms	1.00
Full Baths	1
Square Footage	638
Acres	0.00
Year Built	2005



Type	Condo / Townhouse
Sub-Type	Lowrise Apartment
Style	Single Level Apartment
Status	Active

### Community Information

Address	220 151 Edwards Drive
Area	Edmonton
Subdivision	Ellerslie
City	Edmonton
County	ALBERTA
Province	AB
Postal Code	T6X 1N5

### Amenities

Amenities	Exercise Room, Parking-Visitor, Security Door, Storage-In-Suite
Parking	Stall

### Interior

Appliances	Dishwasher-Built-In, Dryer, Hood Fan, Oven-Microwave, Refrigerator, Stove-Electric, Washer
Heating	Baseboard, Natural Gas
# of Stories	4
Stories	1
Has Basement	Yes
Basement	None, No Basement

### Exterior

Exterior	Wood, Metal, Stone, Vinyl
Exterior Features	Golf Nearby, Playground Nearby, Public Swimming Pool, Public Transportation, Schools, Shopping Nearby
Roof	Asphalt Shingles
Construction	Wood, Metal, Stone, Vinyl
Foundation	Concrete Perimeter

### Additional Information

Date Listed	May 14th, 2025
Days on Market	11
Zoning	Zone 53

Condo Fee                \$423

DATA IS DEEMED RELIABLE BUT IS NOT GUARANTEED ACCURATE BY THE REALTORS® ASSOCIATION OF EDMONTON. COPYRIGHT 2025 BY THE REALTORS® ASSOCIATION OF EDMONTON. ALL RIGHTS RESERVED.Trademarks are owned or controlled by the Canadian Real Estate Association (CREA) and identify real estate professionals who are members of CREA (REALTOR®, REALTORS®) and/or the quality of services they provide (MLS®, Multiple Listing Service®)

Listing information last updated on May 24th, 2025 at 11:02pm MDT