

\$390,000 - 16313 87 Avenue, Edmonton

MLS® #E4436728

\$390,000

6 Bedroom, 2.50 Bathroom, 1,093 sqft
Single Family on 0.00 Acres

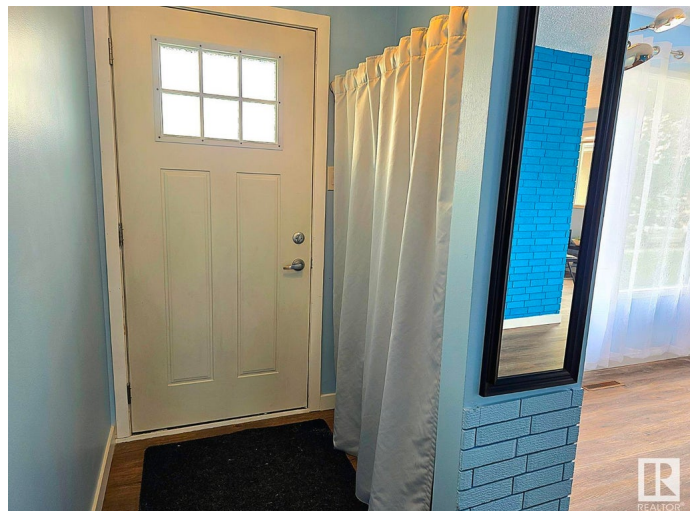
Elmwood, Edmonton, AB

Welcome to this spacious 6-bedroom bungalow with a separate entrance and fully finished basement—perfect for large families, multi-generational living, or savvy investors! Ideally located near West Edmonton Mall, Misericordia Hospital, schools, and the future West LRT line, this home combines convenience with comfort. The bright and modern gourmet kitchen features stainless steel appliances and overlooks your sunny south-facing yard. Vinyl plank flooring flows throughout the main level, which includes 3 bedrooms, a 4pc bath, and a 2pc ensuite in the generous primary. The basement boasts 3 more bedrooms, a 3pc bath, and a large rec room. Upgrades include: brand new furnace, fresh paint, newer roof, updated kitchen, appliances & bathroom. Enjoy your private backyard with mature landscaping, an oversized single garage & extra parking for an RV or other toys. Move-in ready and centrally located—this is a must-see!

Built in 1964

Essential Information

MLS® #	E4436728
Price	\$390,000
Bedrooms	6
Bathrooms	2.50



Full Baths	2
Half Baths	1
Square Footage	1,093
Acres	0.00
Year Built	1964
Type	Single Family
Sub-Type	Detached Single Family
Style	Bungalow
Status	Active

Community Information

Address	16313 87 Avenue
Area	Edmonton
Subdivision	Elmwood
City	Edmonton
County	ALBERTA
Province	AB
Postal Code	T5R 4H1

Amenities

Amenities	Gazebo
Parking Spaces	4
Parking	Over Sized, RV Parking, Single Garage Detached

Interior

Interior Features	ensuite bathroom
Appliances	Dishwasher-Built-In, Dryer, Hood Fan, Oven-Microwave, Refrigerator, Storage Shed, Stove-Electric, Washer, Window Coverings
Heating	Forced Air-1, Natural Gas
Stories	2
Has Basement	Yes
Basement	Full, Finished

Exterior

Exterior	Wood, Stucco
Exterior Features	Back Lane, Fenced, Fruit Trees/Shrubs, Golf Nearby, Landscaped, Playground Nearby, Public Transportation, Schools, Shopping Nearby
Roof	Asphalt Shingles
Construction	Wood, Stucco

Foundation Concrete Perimeter

Additional Information

Date Listed May 15th, 2025

Days on Market 8

Zoning Zone 22

DATA IS DEEMED RELIABLE BUT IS NOT GUARANTEED ACCURATE BY THE REALTORS® ASSOCIATION OF EDMONTON. COPYRIGHT 2025 BY THE REALTORS® ASSOCIATION OF EDMONTON. ALL RIGHTS RESERVED.Trademarks are owned or controlled by the Canadian Real Estate Association (CREA) and identify real estate professionals who are members of CREA (REALTOR®, REALTORS®) and/or the quality of services they provide (MLS®, Multiple Listing Service®)

Listing information last updated on May 23rd, 2025 at 12:32am MDT